

# Belmont School (Lower Hutt) (2807)

## ENROLMENT SCHEME

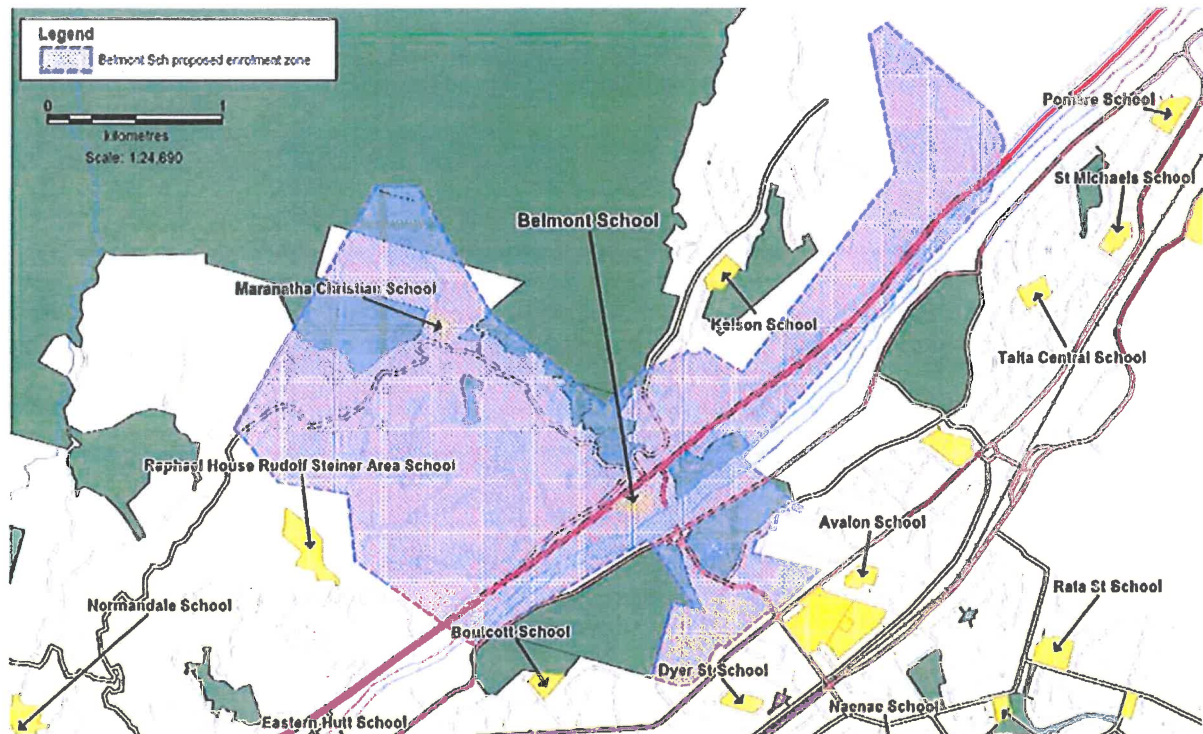
### Home Zone

All students who live at an address within the home zone described below\* (and shown on the attached map) shall be entitled to enrol at Belmont School.

The Belmont School Home zone will include addresses in the Western Hill suburbs of Belmont Hills including Aran More Place, Atherstone Lane, Avonlea Grove, Belmont Terrace, Bermer Road, Coach Lane, Corrondella Grove, Crestview Grove, Dalkeith Lane, Fantail Grove, Fawcet Place, Foster Crescent, Gainsborough Grove, Groundsell Crescent, Hill Road, Lillian Street, Meadowbank Drive, Natusch Road, Palm Grove, Park Grove, Park Road, Pearsons Lane, Picasso Grove, Powell Road, Redvers Drive, Renoir Avenue, Sweetacres Drive, Tara Place, Wairere Road, Winifred Way.

The lower Kelson slopes including Bedford Grove, Euclid Grove, Gurney Road from 1 up to and including 62 at the corner of Terrys Place, Hebden Crescent from the southern end from 300 up to and including 385 at the intersection with Liverton Road, Levin Grove, Liverton Road, Major Drive from 1 up to and including 54 at the corner of Sunshine Crescent, Sunshine Crescent, Viscount Grove, Vista Grove.

Belmont Domain including Carter Street, Charles Street, Edwin Street, Norfolk Street, Owen Street and Richard Street.



Across the river at Kennedy Good bridge to include Allen Street, Athlone Crescent, Avery Grove, Charleston Avenue, Fairway Drive, Frederick Street, Gadsby Street, Hart Avenue, Kilmister Grove, Kingston Street, Scanlan Street, St James Avenue, Stellin Street, Taita Drive from 2 up to and including 98 at the north entrance to Avalon Park.

Proof of residence of a property within the home zone will be required (for example a copy of a utility bill with the name of a parent or guardian and an address within the home zone, covering the date of enrolment or earlier). Where a property has two or more entrances on different streets, or where the actual address of a property is in dispute, only the rateable address as recognised by the Hutt City Council will be considered to determine if the property is in or out of zone.

Twice each year, applications for enrolment from in-zone students will be sought 3 weeks before the end of terms 2 and 4, these dates will be published at least two months before the end of terms 2 and 4, in a daily or community newspaper circulating in the area served by the school. This will enable the Board to assess the number of places which can be made available to students who live outside the home zone during the last month of term.

### **Out of Zone Enrolments**

Every 6 months the board will determine the number of places which are likely to be available in the following 6 month period for the enrolment of students who live outside the home zone. The board will publish this information by notice in a daily or community newspaper circulating in the area served by the school. The notice will indicate how applications are to be made and will specify a date by which all applications must be received.

**Applications for enrolment will be processed in the following order of priority:**

First Priority	This priority category is not applicable at this school because the school does not run a special programme approved by the Secretary.
Second Priority	Will be given to applicants who are siblings of current students.
Third Priority	Will be given to applicants who are siblings of former students.
Fourth priority	Will be given to applicants who are children of former students.
Fifth priority	Will be given to applicants who are either a child of an employee of the board of the school or a child of a member of the board of the school.
Sixth priority	Will be given to all other applicants.

If there are more applicants in the second, third, fourth, fifth or sixth priority groups than there are places available, selection within the priority group will be by a ballot conducted in accordance with instructions issued by the Secretary under Section 11G(1) of the Education Act 1989.

Parents will be informed of the date of any ballot by notice in a daily or community newspaper circulating in the area served by the school.

Applicants seeking second or third priority status may be required to give proof of a sibling relationship.